

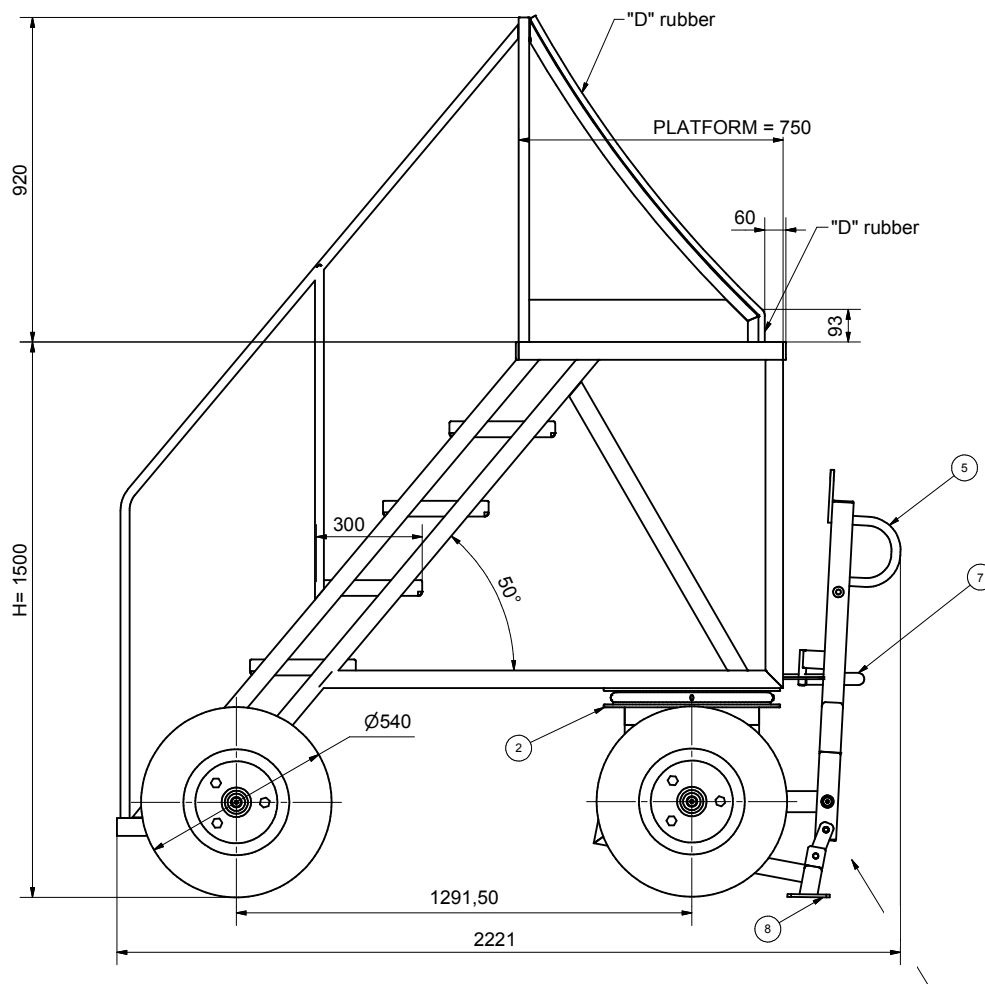
➤ E&E Bay Access Steps



These specialist access steps have been designed and developed with aircraft ramp maintenance engineers to provide a safe user friendly stable work platforms, based on the standard flip top ramp step chassis, for fast turn round access and maintenance activity in specific areas in all conditions. These included Engine Under Cowl and Airbus E&E bays. All models are easy to tow, manoeuvre and position with large wheels, robust turntable steering with auto braking/jacking and incorporate large non slip self draining treads with platforms.

These steps are now available as standard with enhanced specification running gear including heavy duty foam filled 600 x 9 tyres. For “hanger use only” lighter duty wheels can be fitted as an option.

- ▶ Modular design tailored to specific tasks and applications
- ▶ Designed for ramp towing
- ▶ Automatic front stabilisers



> OPTIONS / EXTRAS

- ▶ Special handrails
- ▶ Stabilisers - additional wind down / kickdown
- ▶ Hydraulic power pack - manual /battery electric / diesel
- ▶ Tow hitch dimensions - 30mm (Standard fit suitable for 25mm pin), 40mm, 50mm, 75mm
- ▶ Customised RAL colours / corporate colours
- ▶ Wire tool basket
- ▶ Additional buffers